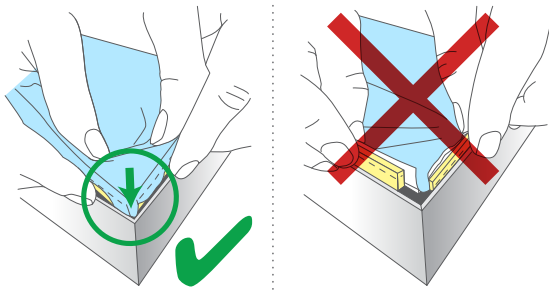


Fabric Installation

- 1.** Insert the fabric into the frame channel starting with the corners. Ensure the welt is turned in and completely concealed.



- 2.** Push the welt as far in the channel as possible.



- 3.** Once the corners are in place, continue insertion at the middle of each frame section.

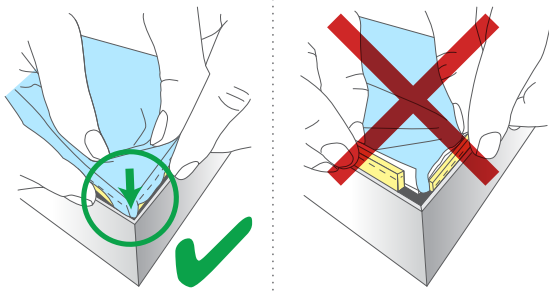


- 4.** Continue until the welt is completely inserted.



Fabric Installation

- 1.** Insert the fabric into the frame channel starting with the corners. Ensure the welt is turned in and completely concealed.



- 2.** Push the welt as far in the channel as possible.



- 3.** Once the corners are in place, continue insertion at the middle of each frame section.



- 4.** Continue until the welt is completely inserted.

